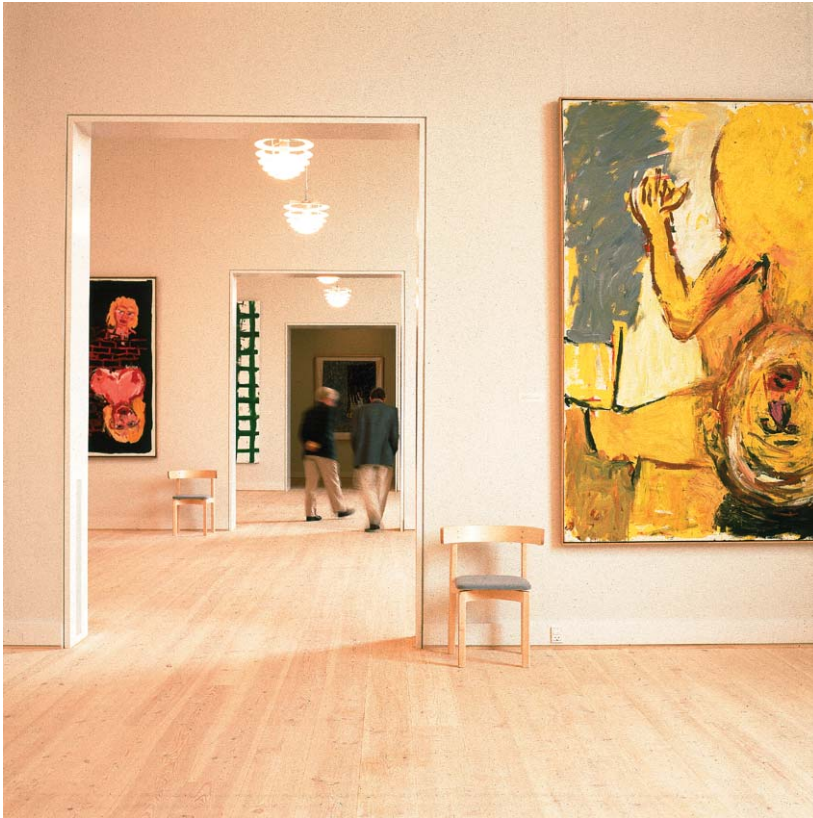


## NATIONAL GALLERY OF DENMARK



Erik Møller Arkitekter have been architects for the National Gallery of Denmark since 1984, by virtue of Jens Fredslund's position with the royal control of listed buildings. The drafting office has carried out a number of building assignments over the years with the exception of the large annex that was extended following a competition in 1996.

Among other things, the drafting office has created new special-exhibition rooms in the former Munch Room, installed a new cinema and improved the museum's stacks and depot facilities with a new painter's depot, as well as converting the museum's access conditions to give better accessibility for wheelchair users and others. The drafting office is currently working on a large-scale fire protection system for the old building.

Client:	Danish Ministry of Culture
Year:	1984-
Excl.	1996-1998
Architect:	Erik Møller Arkitekter AS

