

AMALIENBORG PALACE



This complex is the supreme work of Danish rococo architecture and can hold a candle to the best of them abroad. Nicolai Eigtved was the architect, and the complex was inaugurated in 1754. The four identical palaces radiate a natural elegance and reserved refinement, and together they define the palace square as a precise, airy and exclusive urban space with its centre in Saly's equestrian statue of Frederik V from 1768.

Since 2002 Erik Møller Arkitekter have been working on the listed complex. The work is being executed on the basis of an analysis of the complex's fundamental preservation values, which are rooted in the hierarchical layout of the complex and grounds as a whole, allocated between palaces, pavilions, communicating buildings and annexes.

Restoration of the wings includes foundation work on all supporting walls, replastering of facades, refurbishment of doors and windows, and replacement of roofs.

The exterior restoration of Frederik VIII's Palace includes replastering of facades, repairs to sandstone facades, consolidation of balustrade walls and substitution of roofs. In addition, extensive rot and fungal damage in the joisting and roof structures is being repaired.

Refurbishment of windows includes three palaces as well as parts of the wings. The windows have been totally refurbished, and for this large-scale work a special window workshop has been set up in the palace grounds. All frames are dipped in gently heated linseed oil, fettled, repaired by a joiner and painted with linseed oil.

Client: Palaces & Properties Agency
Scope: 38,000 sq.m
Year: 2002 - 2010
Engineer: Eduard Troelsgård AS
Architect: Erik Møller Arkitekter AS



AMALIENBORG PALACE - REFURBISH OF WINDOWS



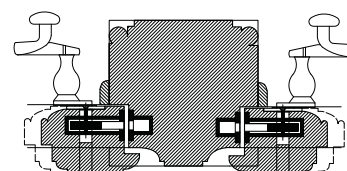
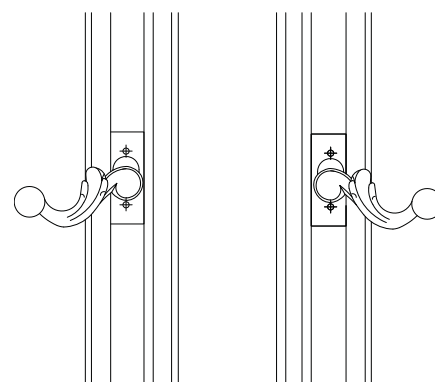
The project included the need to totally refurbish many of the castle complex's windows over a two-year period. In order to achieve the highest quality as part of a rational process, a large window workshop was set up in the gardens behind Frederik VIII's Palace.

The windows are originals from the time of construction in 1754 / 1801, and the choice of execution method and materials has prioritized an outcome that provides the best possible basis for future upkeep and maintenance. Painting has been done with linseed oil, oak and deal repair work carried out with finest-quality wood, and hand-blown glass used to create a beautiful setting to match the facades of the buildings in general. The window workshop has provided an ideal framework for carrying out the restoration work, to standards of the highest quality of craftsmanship.

At the workshop all frames have been refurbished, and working zones established for all the craftsmen's disciplines, in a logical sequence corresponding to the process:

- Glazier's workshop for removal of glass and reglazing
- Container for heated linseed oil bath
- Painter's workshop for fettling and corrosion-proofing of hardware
- Joiner's workshop for repairing frames and window bars
- Painter's workshop for linseed oil painting

The sills have been refurbished on the spot, working from platforms/scaffolding.



Client: Palaces & Properties Agency
 Scope: approx. 500 window lights
 Year: 2004 - 2007
 Architect: Erik Møller Arkitekter AS

